

(Product may differ / Le produit peut différer / El producto puede diferir.)

SHOWER KNOBS

BOUTONS DE DOUCHE

POMOS DE DUCHA

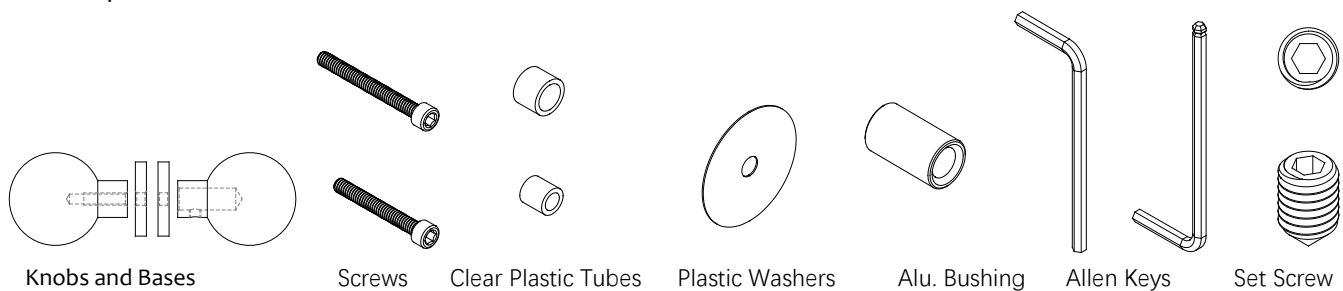
⚠ CALIFORNIA PROPOSITION 65 WARNING: This product can expose you to chemicals including Lead which is known to the State of California to cause cancer and birth defects or other reproductive harm. For more information go to <https://www.p65warnings.ca.gov/>

Do not dispose of any packaging or contents of the shipping carton until assembly is completed to avoid accidentally discarding small parts or hardware.

These knobs include hardware that is designed to mount securely to shower doors that have a thickness range between 1/4 inch and 1/2 inches. If your shower door is thicker or thinner than this range, please obtain the appropriate size screw from your local hardware store.

PARTS INCLUDED

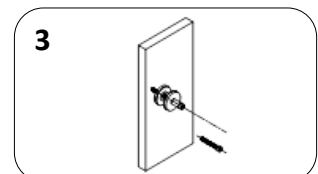
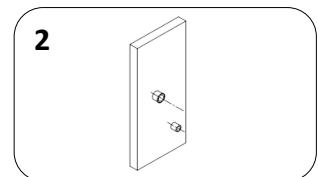
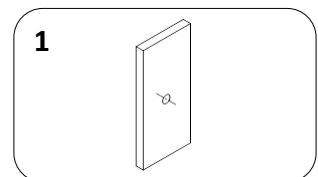
- 1pc Knob with threaded hole, 1pc Knob without threaded hole and 2pcs Plate Bases
- 1pc 8-32, 1-1/4" Hex Skt. Head Machine Screw and 1pc 8-32, 1-1/2" Hex Skt. Head Machine Screw
- 1pc 3/8" Dia. Clear Plastic Tube and 1pc 1/2" Dia. Clear Plastic Tube
- 2pcs Clear Plastic Washers
- 1pc Aluminum Bushing
- 1pc Allen Key 9/64 "
- 1pc Allen Key 5/64 "
- 1pc Set Screw



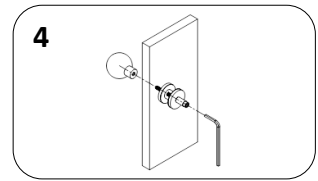
MOUNTING INSTRUCTIONS

Note: The knobs are to mount on a glass shower door with widths of 1/4" or 1/2", required the hole sizes of diameter 3/8" or 1/2" pre-drilled.

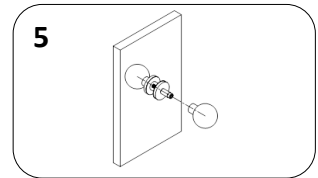
1. Hole of 3/8" or 1/2" pre-drilled before installing the Knobs to the glass shower door with widths of 1/4" or 1/2".
2. Insert the appropriate diameter Clear Plastic Tube. If needed, combine the 2 tubes together for 1/2" diameter mounting hole.
3. Attach the Plastic Washer, Knob Base and Alu. Bushing onto the Screws (use proper screw according to the door thickness). Insert the Screw into the door hole with Clear Plastic Tube installed, then attach the Plastic Washer, Knob Base onto the inserted Screw.



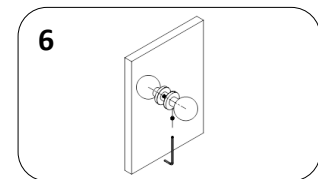
4. Insert the Screw into one Knob with threaded hole using the provided $9/64$ " Allen Key. Completely tighten the socket head screw.



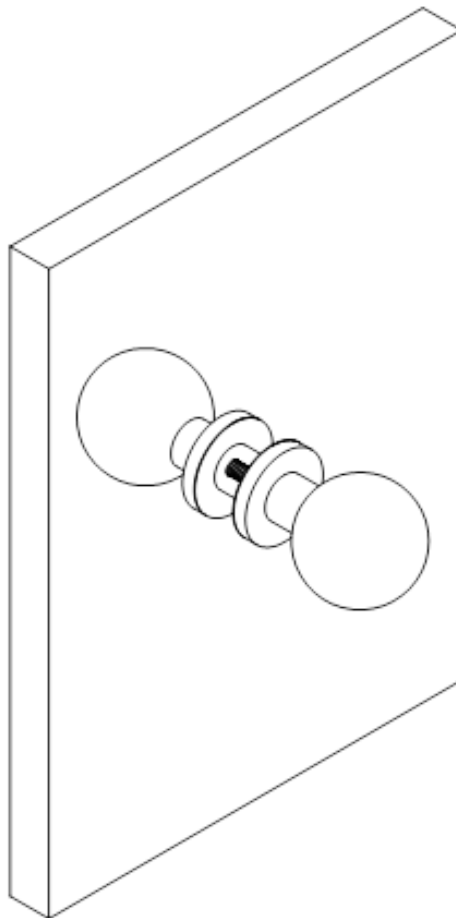
5. Install the other Knob without threaded hole on the opposite side of the door, and make sure the Screw is fully inserted.



6. Keep the Knobs tight to the surface of the Bases and the door, tighten the side Set Screw very firmly to ensure a secure mount with the provide $5/64$ " Allen Key. The stainless-steel set screw with bite into the Aluminum Bushing inside the Screw.



The completed assembly will look like this:



CARE INSTRUCTIONS

1. Use only a clean, soft, dry and lint-free cloth to remove dust.
2. Do not recommend the use of chemical cleansers, abrasives or furniture polish on our lacquered finish.
3. Hardware may loosen over time. Periodically check to make sure all connections are tight. Re-tighten if necessary.