

(Product may differ / Le produit peut différer / El producto puede diferir.)

SHOWER PULLS

POIGNÉES DE DOUCHE

TIRADORES DE DUCHA

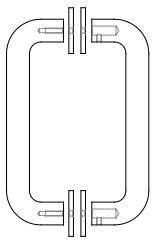
⚠ CALIFORNIA PROPOSITION 65 WARNING: This product can expose you to chemicals including Lead which is known to the State of California to cause cancer and birth defects or other reproductive harm. For more information go to <https://www.p65warnings.ca.gov/>

Do not dispose of any packaging or contents of the shipping carton until assembly is completed to avoid accidentally discarding small parts or hardware.

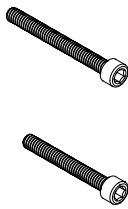
These pulls include hardware that is designed to mount securely to shower doors that have a thickness range between 1/4 inch and 1/2 inches. If your shower door is thicker or thinner than this range, please obtain the appropriate size screw from your local hardware store.

PARTS INCLUDED

- 1pc Pull with threaded holes, 1pc Pull without threaded holes and 4pcs Plate Bases
- 2pcs 8-32, 1-1/4" Hex Skt. Head Machine Screws and 2pcs 8-32, 1-1/2" Hex Skt. Head Machine Screws
- 2pcs 3/8" Dia. Clear Plastic Tubes and 2pcs 1/2" Dia. Clear Plastic Tubes
- 4pcs Clear Plastic Washers
- 2pcs Aluminum Bushings
- 1pc Allen Key 9/64"
- 1pc Allen Key 5/64"
- 2pc Set Screws



Pulls and Bases



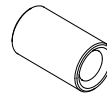
Screws



Clear Plastic Tubes



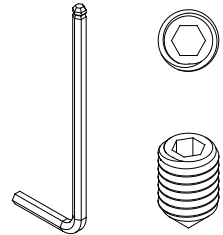
Plastic Washers



Alu. Bushing



Allen Keys

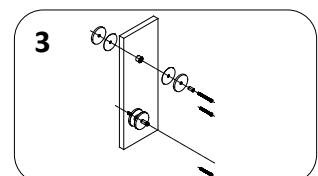
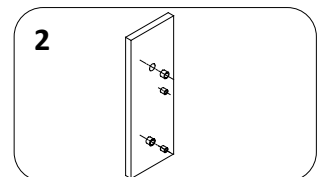
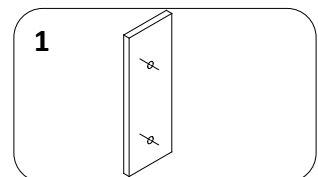


Set Screw

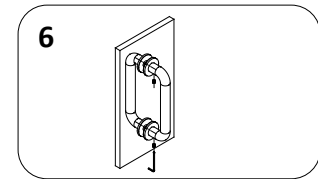
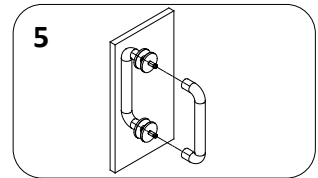
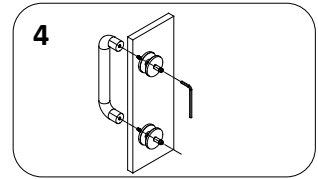
MOUNTING INSTRUCTIONS

Note: The knobs are to mount on a glass shower door with widths of 1/4" or 1/2", required the hole sizes of diameter 3/8" or 1/2" pre-drilled.

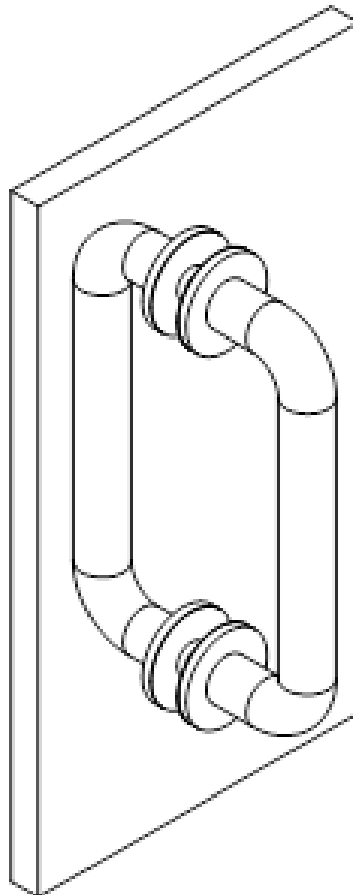
1. Holes of 3/8" or 1/2" pre-drilled before installing the Pulls to the glass shower door with widths of 1/4" or 1/2".
2. Insert the appropriate diameter Clear Plastic Tubes. If needed, combine the 2 tubes together for 1/2" diameter mounting holes.
3. Attach the Plastic Washers, Pull Bases and Alu. Bushings onto the Screws (use proper screws according to the door thickness). Insert the Screws into the door hole with Clear Plastic Tubes installed. Attach the Plastic Washers, Pull Bases onto the inserted Screws.



4. Insert the Screws into one Pull using the provided 9/64" Allen Key. Completely tighten the socket head screws.
5. Install the other Pull on the opposite side of the door, and make sure the Screws are fully inserted.
6. Keep the Pulls tight to the surface of the Bases and the door, tighten the side Set Screws very firmly to ensure a secure mount with the provide 5/64" Allen Key. The stainless-steel set screws will bite into the Aluminum Bushings inside the Screws.



The completed assembly will look like this:



CARE INSTRUCTIONS

1. Use only a clean, soft, dry and lint-free cloth to remove dust.
2. Do not recommend the use of chemical cleansers, abrasives or furniture polish on our lacquered finish.
3. Hardware may loosen over time. Periodically check to make sure all connections are tight. Re-tighten if necessary.