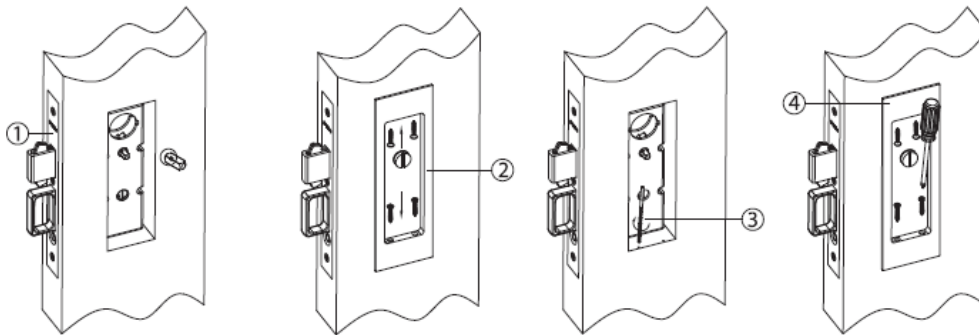


Fredrick Pocket Door Set

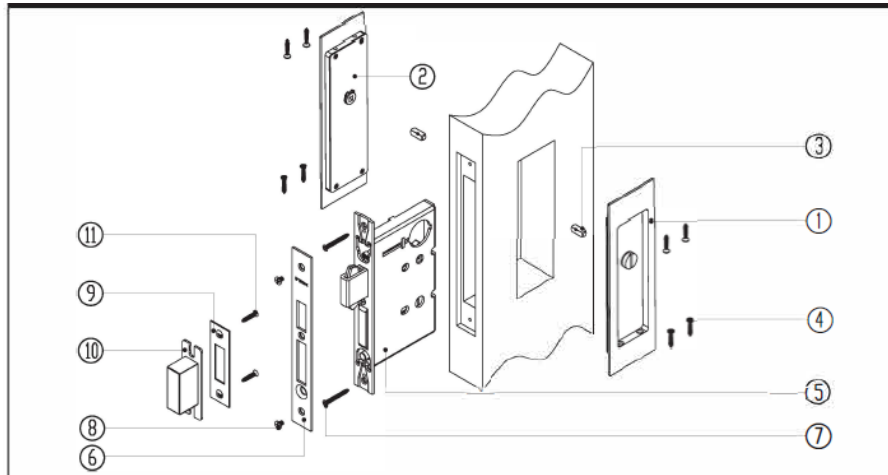


1. Make sure the mortise case is completely installed & correctly aligned before installing the trim.

2. Align trim to correct position, making sure the trim is flush against the door. Use the supplied screws or a marking tool to mark the screw position.

3. Remove the trim & pre-drill the screw holes using the marked positions.

4. Install the trim using the 4 supplied wood screws. Tighten screws evenly; uneven tightening of the screws could cause spindle misalignment.



Items	No.	Parts Description	Function				
			Passage	Privacy	Entry	Patio	Dummy
Flush Pull Parts	1	Outside Flush Pull	1 EA	1 EA	1 EA	1 EA	1 EA
	2	Inside Flush Pull	1 EA	1 EA	1 EA	1 EA	1 EA
	3	Spindle	-	2 EA	1 EA	1 EA	-
	4	#6 Wood Screw	8 EA	8 EA	6 EA	8 EA	8 EA
Locks	5	Mortise Pocket Lock	1 EA	1 EA	1 EA	1 EA	-
	6	Armored Faceplate	1 EA	1 EA	1 EA	1 EA	-
	7	#8 screws for Inner Faceplate	2 EA	2 EA	2 EA	2 EA	-
	8	#8 screws for Armored Faceplate	3 EA	3 EA	3 EA	3 EA	-
	9	Striking Plate	1 EA	1 EA	1 EA	1 EA	-
	11	Dust Box	1 EA	1 EA	1 EA	1 EA	-
	-	Screws for Striking Plate	2 EA	2 EA	2 EA	2 EA	-
-	Mortise Cylinder	-	-	1 EA	-	-	
-	Key	-	-	2 EA	-	-	
Others	-	Door Prep Template	1 EA	1 EA	1 EA	1 EA	1 EA
	-	Installation Instruction	1 EA	1 EA	1 EA	1 EA	1 EA