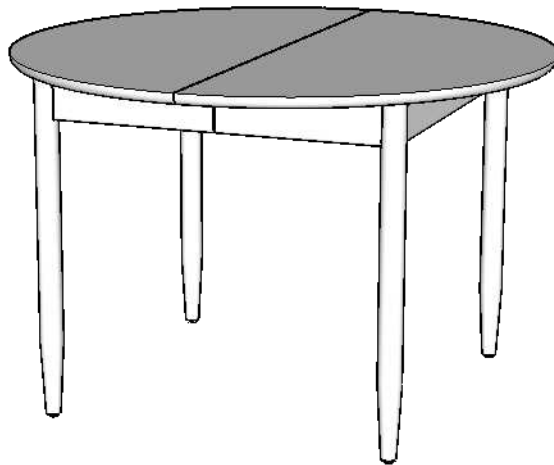


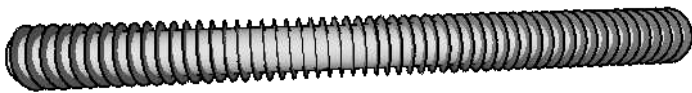
REJUVENATION

ASSEMBLY INSTRUCTIONS

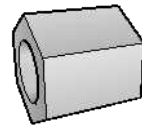
Shaw Dining Table - Round Extension



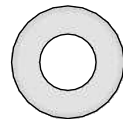
Hardware List:



3-1/2" Bolt (x8)



Nut (x8)



Washers (x8)

Pieces List:

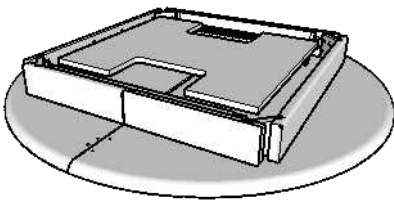
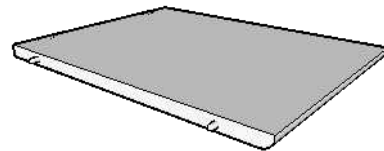


Table Top
(x1)



24" Leaf (x1)



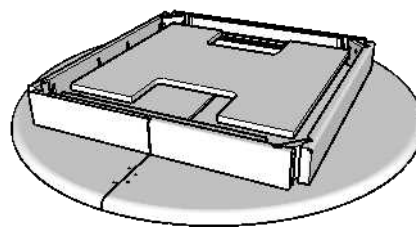
Leg (x4)

REJUVENATION

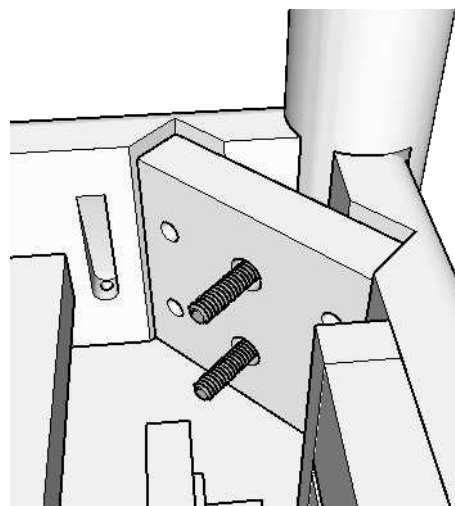
ASSEMBLY INSTRUCTIONS

Shaw Dining Table - Round Extension

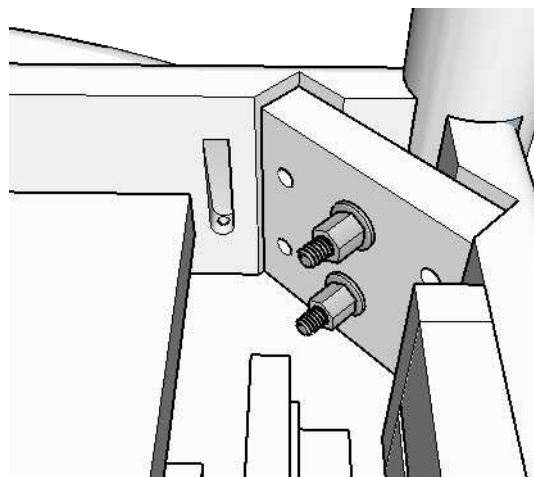
Step 1: Remove table base from packaging and place upside down on a non-abrasive surface.



Step 2: Remove legs from packaging and place one in a corner, placing bolts through corner block holes.



Step 3: Loosely tighten table leg by placing a washer and nut on the end.

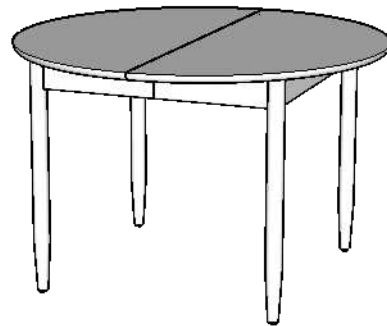


REJUVENATION

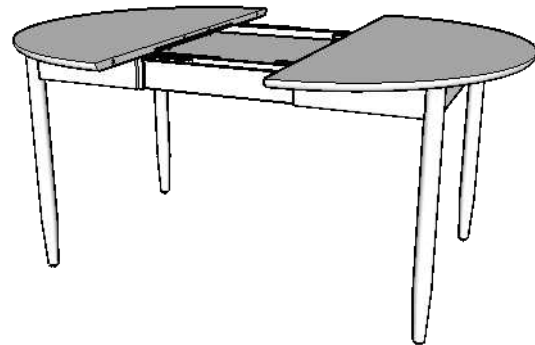
ASSEMBLY INSTRUCTIONS

Shaw Dining Table - Round Extension

Step 4: Turn table right side up. Tighten lag bolts securely into place.



Step 5: Unlock table top and slide open to place the leaf on the storage braces.



Step 6: Close, lock the top in place and enjoy your new dining table.

