

# REJUVENATION

SUAVE  
wall hung toilet

## Specifications:

<b>Installation:</b>	Wall hung
<b>Dimensions:</b>	14 1/2" w x 21 1/2" d x 15 1/4" h
<b>Material:</b>	Porcelain
<b>Flush System:</b>	Concealed in-wall dual flush
<b>Waste Outlet:</b>	Wall
<b>Bowl Shape:</b>	Oval
<b>Trap Diameter:</b>	2 7/8" ID, 3 7/8" OD
<b>Water Use:</b>	1.0 gpf
<b>Weight:</b>	50 lbs
<b>Finishes:</b>	001 - White
<b>Includes:</b>	Support brackets for wall-hung toilets 111.847.00.1 with small contact surfaces (thin profiles) <b>Must be installed on the carrier before wall is closed</b>

## Features:

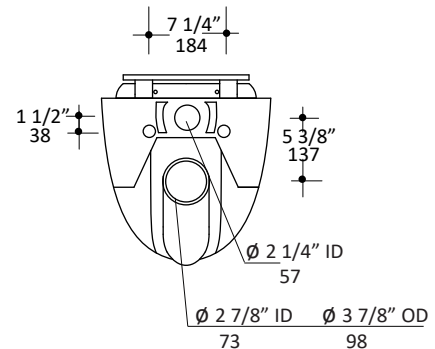
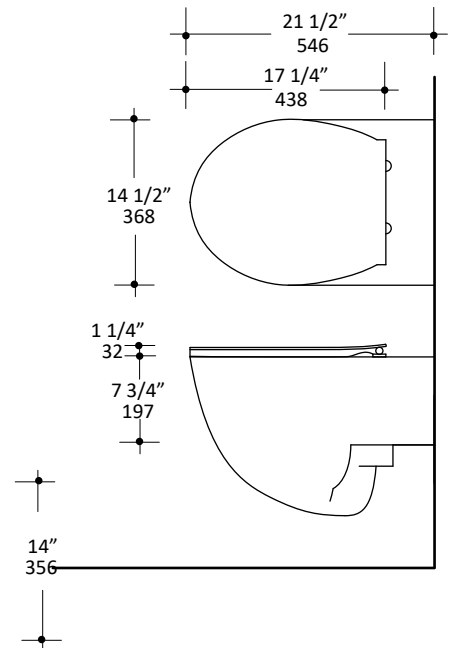
- Porcelain toilet with composite seat cover
- Requires concealed flushing system and flush actuator
- Soft closing seat and seat cover with LED light is included
- Easy-clean porcelain finish
- Weight limit for wall hung: 882 lbs.
- Low consumption dual flush system - effective flush volume: 1.0 gpf
- MaP performance (Miso Rating): 1000g miso

## Codes + Standards:

- Meets and exceeds applicable national codes and standards
- CAL-Green compliant
- CEC compliant

**ADA**

compliant when installed to specific requirements of this regulation

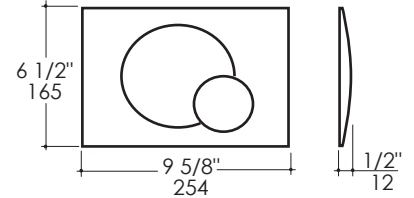


# REJUVENATION

## Dual-Flush Actuator

### Features:

- Dual-flush actuator
- Finish options: Polished Chrome & White



## Geberit In-Wall Tank

### Features:

- Tank and carrier system for wall-hung toilets
- Concealed installation
- Dual flush system 1.6 gpf and 0.8 gpf



### Product Specifications:

#### Notes:

Drawings provided herein are meant to give the user an idea of the product and are not made to scale. The size in inches is rounded up to the nearest 1/16". Slight variances can often occur with porcelain and woodwork.

