



California Faucets®

Asilomar®

CONTEMPORARY FLOOR MOUNT TUB FILLER WITH HANDSHOWER

Features

- Available in 28 finishes including 13 PVD finishes
- All brass construction
- No additional wall or trap stabilizer kit required
- Tub filler maximum flow rate: 15 gpm (56.8 L/min) at 60 psi
- Handshower flow rate: 2.0 gpm (7.6 L/min) or 1.8 gpm (6.8 L/min)
- Handshower bracket may be placed on COLD or HOT side of body
- 1/4 turn ceramic disc cartridges
- Rough kit (9516) sold separately

1103-XX.20
1103-XX.18



1103-66.FR SHOWN

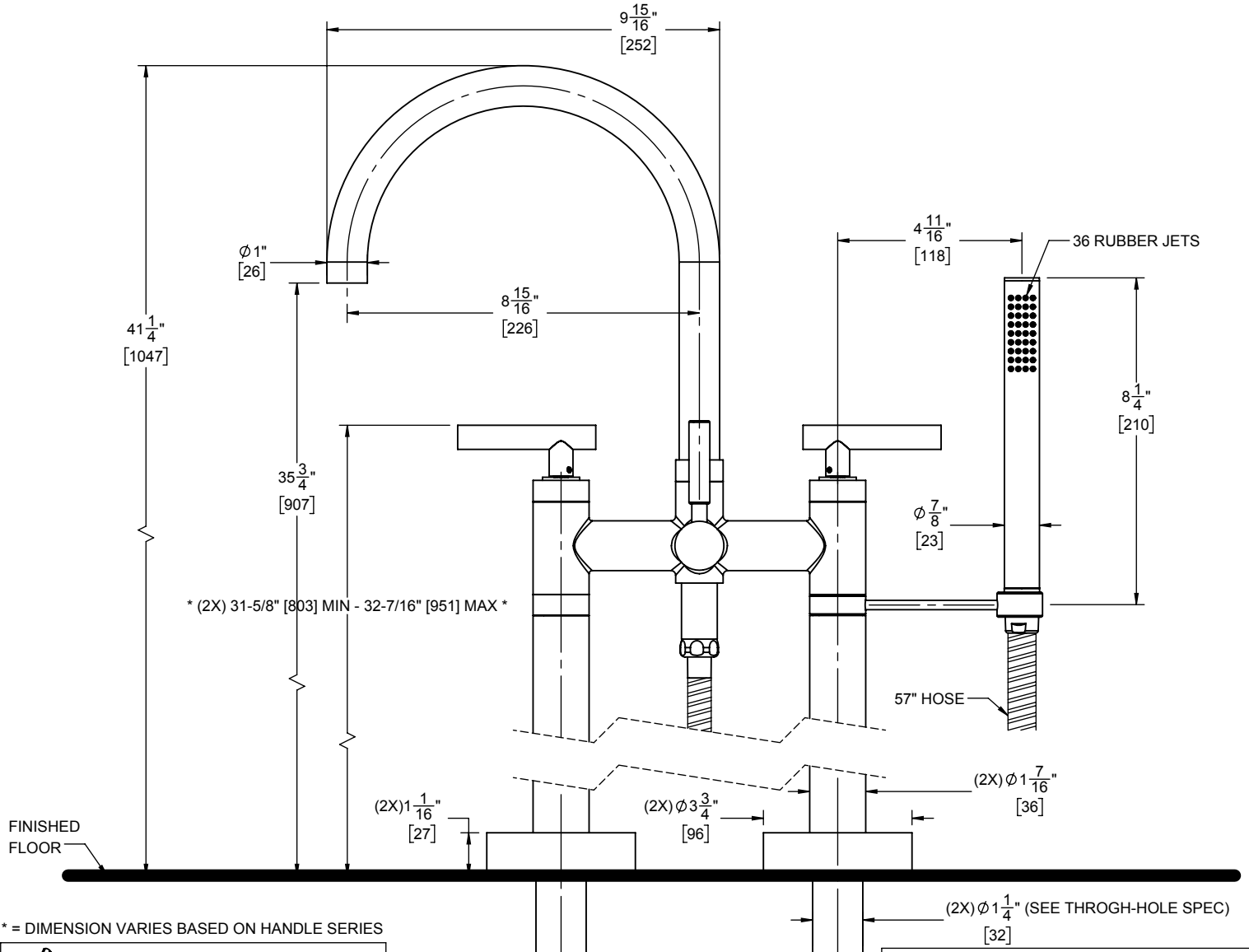
Codes/Standards Applicable

Product meets or exceeds the following:

- ASME A112.18.1/CSA B125.1
- CEC (1.8 gpm) / DOE (2.0 & 1.8 gpm)
- Commonwealth of MA
- EPA WaterSense Handshower (2.0 gpm)
- ADA compliant (with lever handles)
- Local codes may require installation of an upstream tempering valve



XX = DENOTES HANDLE SERIES



* = DIMENSION VARIES BASED ON HANDLE SERIES

- (8X) CONCRETE TRI-LOBE ANCHOR
- (8X) #10 X 2 STAINLESS STEEL SCREW

THROUGH-HOLE SPECIFICATIONS		
MIN	RECOMMENDED	MAX
Ø 1-1/4" [32]	Ø 1-5/16" [33]	Ø 1-1/2" [38]

ALL DIMENSIONS SHOWN TO NEAREST 1/16"
[ALL DIMENSIONS SHOWN TO NEAREST 1MM]

SPECIFICATIONS SUBJECT TO CHANGE WITHOUT NOTICE

Floor Mount Tub Filler – trim only Installation Instructions

CALIFORNIA FAUCETS RECOMMENDS THAT ALL PLUMBING PRODUCTS BE INSTALLED BY A LICENSED PROFESSIONAL

IMPORTANT: Read all instructions prior to installation and provide copy of instructions to consumer.

Operating Specifications:

Recommended Supply Pressure: 20 to 70 psi**†

Maximum Flow Rate: 15 gpm

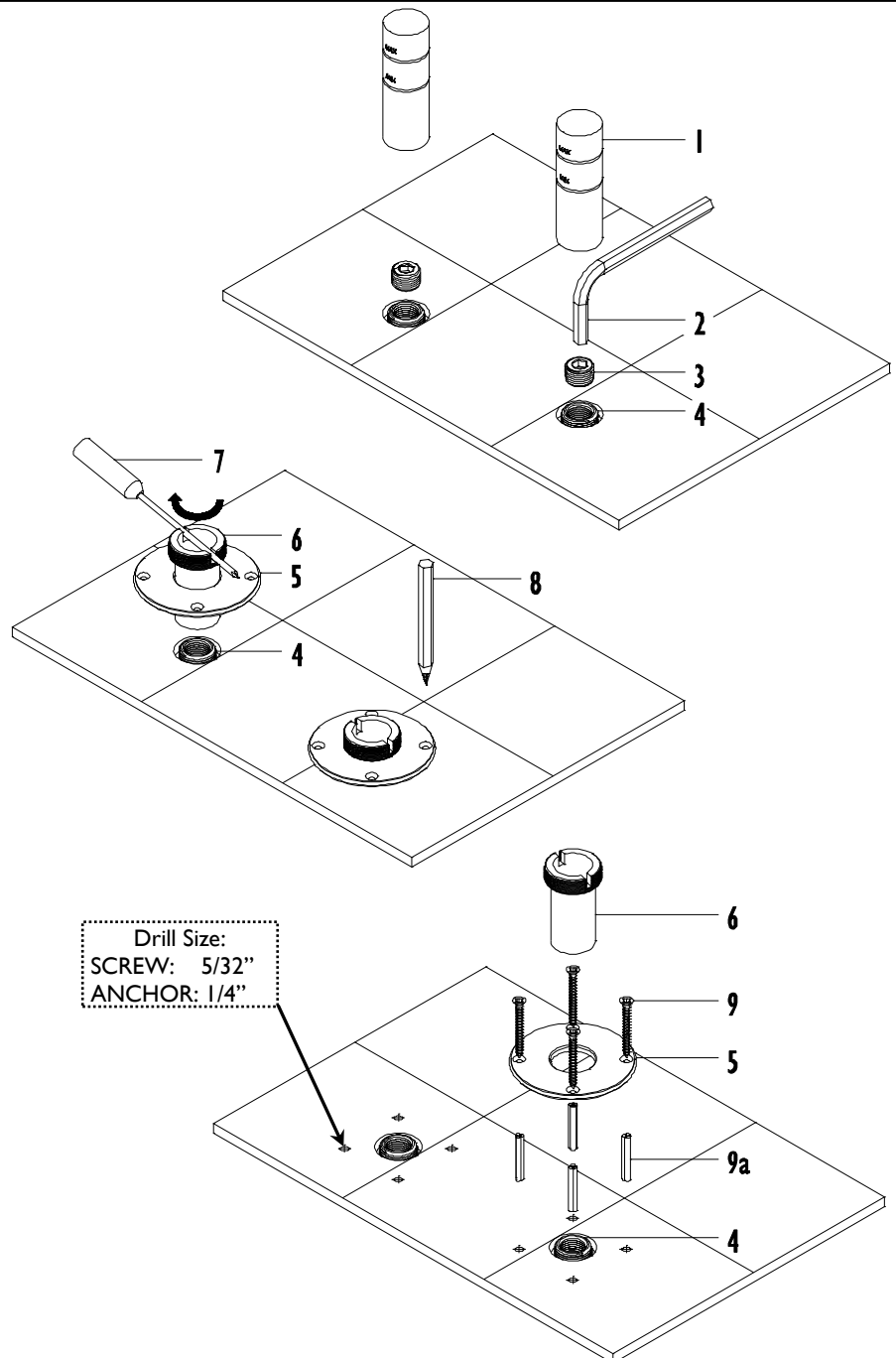
* Operating pressures between hot and cold supplies should vary no more than 30 psi.

† If water pressure exceeds 70 psi, install a Pressure-Reducing Valve (RPV).

I INSTALL FLANGES TO FLOOR

- Remove MUDGUARDS (1)
- Using 3/8" hex KEY (2) (not supplied), remove 1/2" PLUGS (3) from NIPPLES (4)
- Place FLANGE (5) onto SHANK (6) and loosely tighten onto NIPPLE (4) using SCREWDRIVER (7) in slots of SHANK (6)
- Using PENCIL (8) to mark on finished floor screw hole locations from FLANGE (5)
- Remove FLANGE (5) and SHANK (6)
- Pre-drill holes in finished floor use following drill bit:
 - SCREW (only): 5/32"
 - ANCHOR: 1/4"
- Insert ANCHOR (9a) (if required) into pre-drilled holes
- Place FLANGE (5) onto SHANK (6) and loosely tighten onto NIPPLE (4) using SCREWDRIVER (7) in slots of SHANK (6)
- Secure FLANGE (5) into place with SCREWS (9)
- Once SCREWS (9) are tightened, securely tighten SHANK (6) against FLANGE (5)

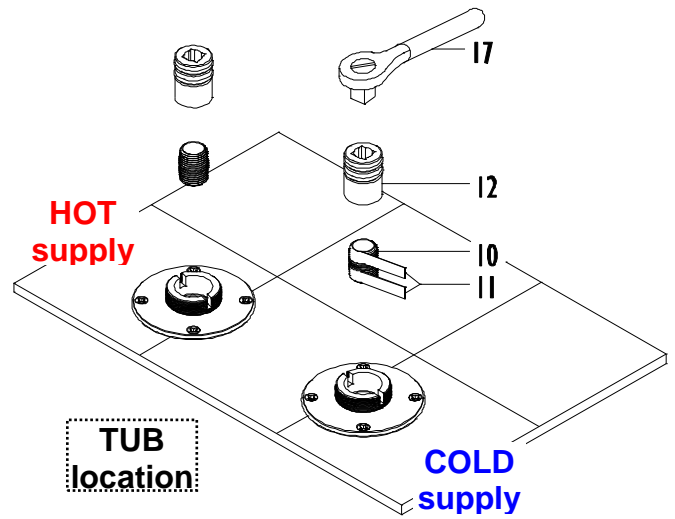
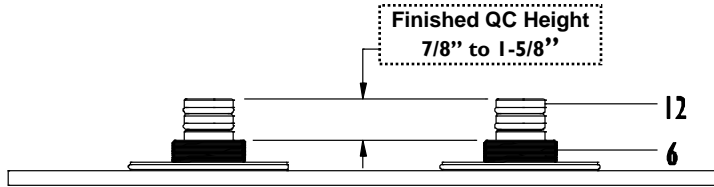
Important: It is necessary to securely tighten the SHANK (6) against FLANGE (5) for proper support of the entire Floor Mount Tub Filler.



2 INSTALLING QUICK CONNECT

- Apply Teflon® TAPE (11) (not supplied) onto both ends on 1/2" NPT (10) nipple (not supplied)
- Insert 1/2" NPT (10) nipple into quick CONNECT (12) first and then using 1/2" drive RATCHET (17) tighten assembly into NIPPLE (4) in flooring rough

Important: It is the responsibility of the **INSTALLER** to select the necessary length of 1/2" NPT (10) nipples to determine proper finished height (7/8" to 1-5/8") of the quick CONNECT (12).



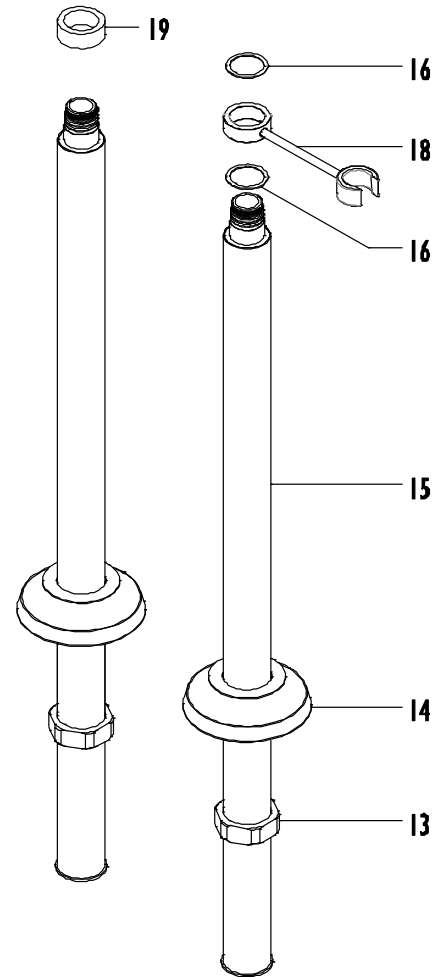
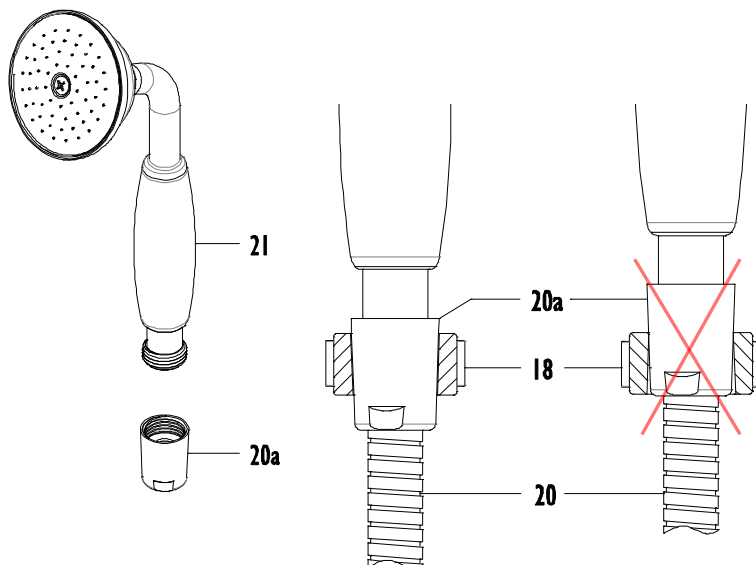
3 PREPARING LEGS

Important: It is the responsibility of the **INSTALLER** to discuss with **CONSUMER** as to which side the HANDSHOWER (21) shall be placed on the Floor Mounted Tub Filler before proceeding.

- Onto each LEG (15) slide tie down NUT (13) and COVER (14)
- LEG (15) *without handshower* place SPACER (19) at top of LEG (15)
- LEG (15) *with handshower* place friction WASHER (16), then HOOK (18) and second friction WASHER (16) on top of LEG (15) (HOOK shall have one friction WASHER on top and bottom)

Important: Proper orientation of the HOOK (18) is necessary to properly allow HANDSHOWER (21) to fit into HOOK (18) before proceeding.

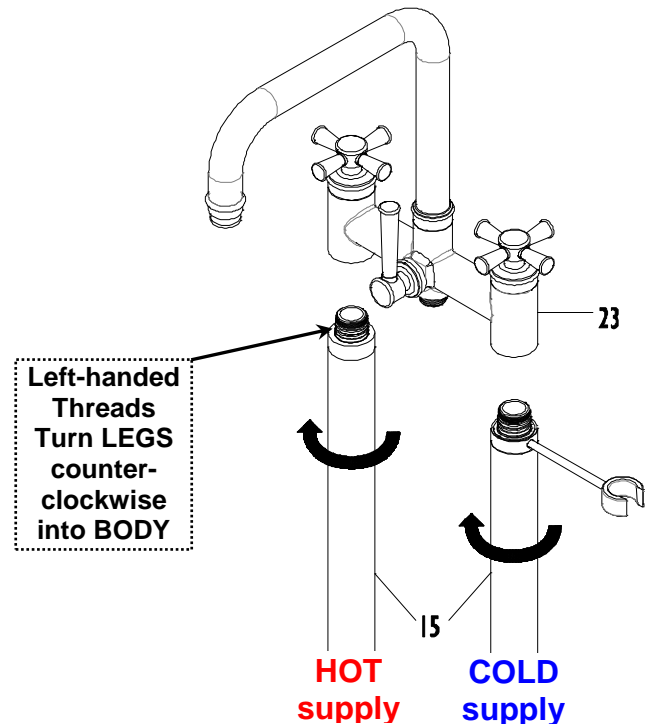
- Attach CONICAL (20a) nut of HOSE (20) to HANDSHOWER (21) to confirm proper orientation of the HOOK (18) as shown below



4 INSTALL LEGS ONTO BODY

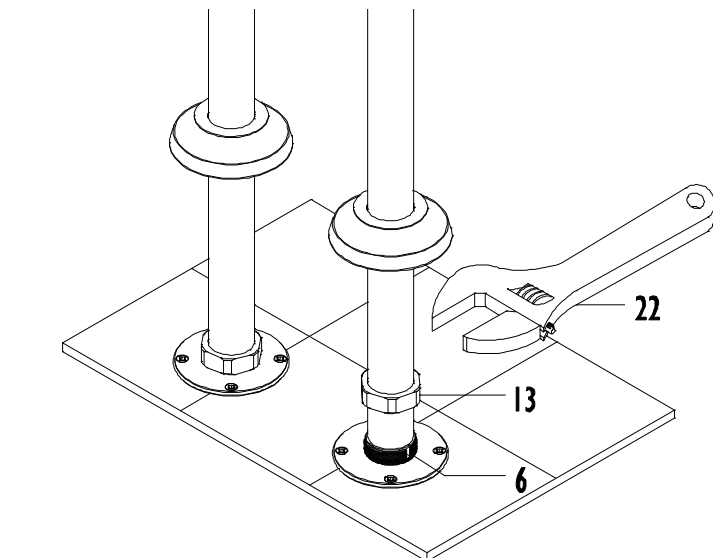
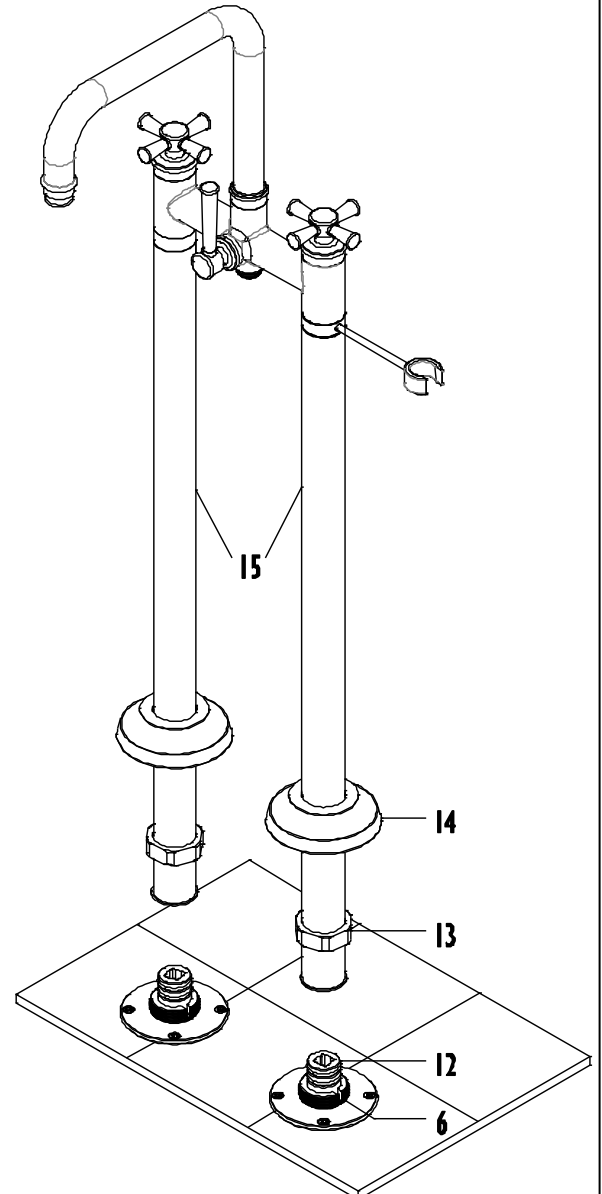
Important: The LEGS (15) have *left-handed threads*, therefore, it is necessary to rotate LEGS (15) *counter-clockwise* into BODY (23)

- Ensure that there is sufficient grease on both O-rings on LEG (15) and securely tighten into BODY (23)
- Repeat same procedure on other side



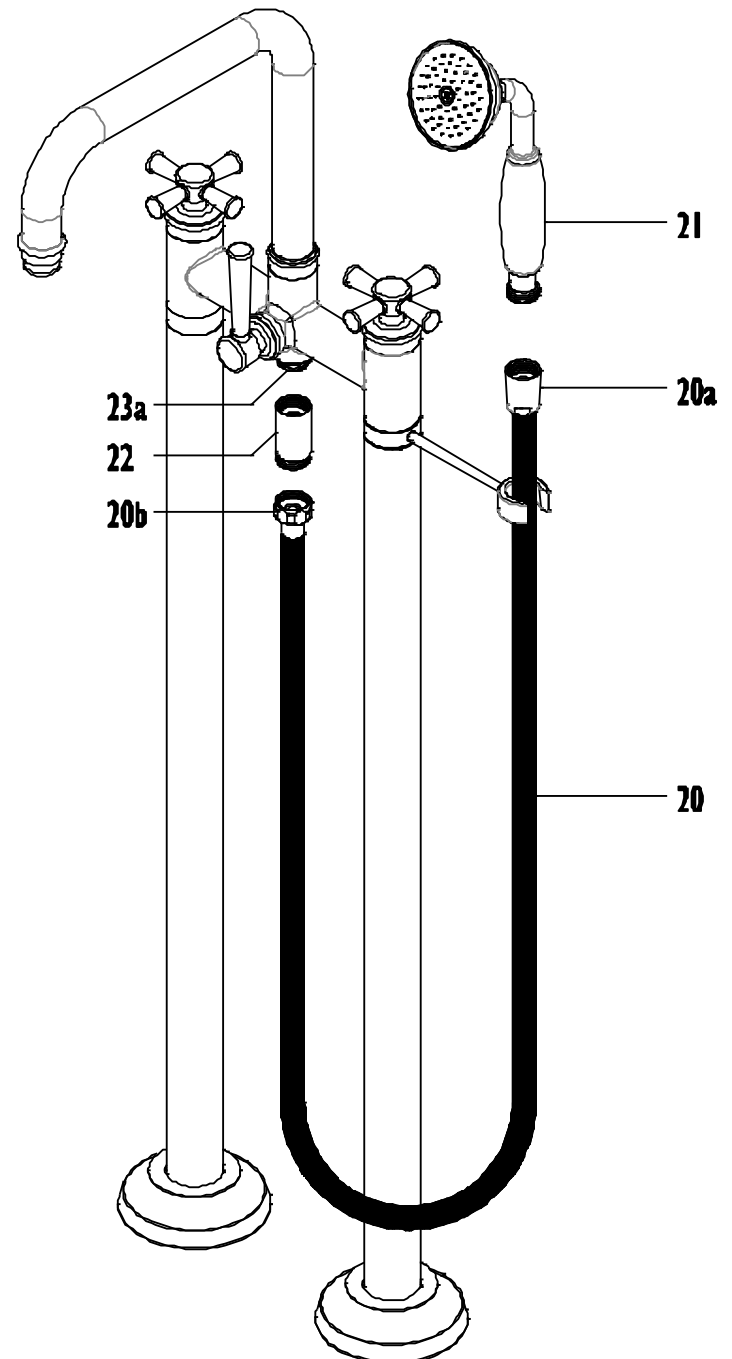
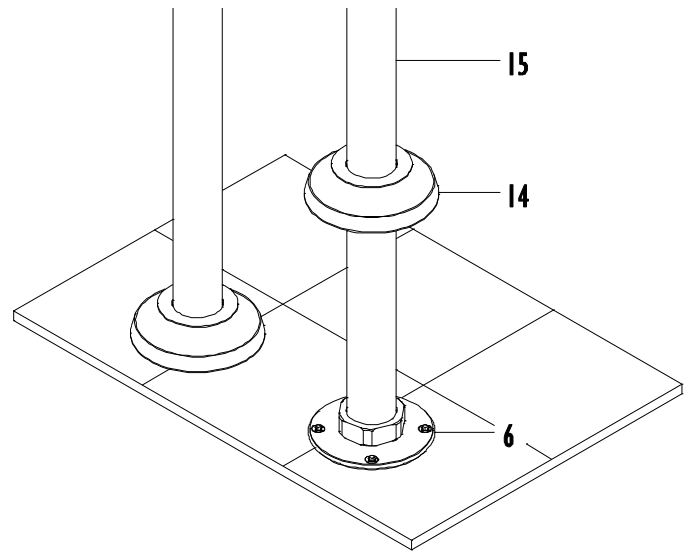
5 ATTACH TO QUICK CONNECT

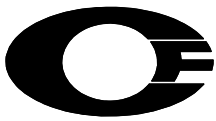
- Ensure that there is sufficient grease on both O-rings on quick CONNECT (12) and slide LEGS (15) onto quick CONNECTS (12)
- Hand tighten tie down NUT (13) onto SHANK (6)
- Using adjustable WRENCH (22) securely tighten tie down NUT (13) onto SHANK (6)
- Repeat same procedure on other side
- Turn water supply on and pressurized faucet to check for leaks



6 FINAL CONNECTIONS

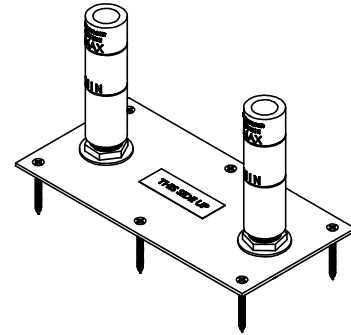
- Slide **COVERS (14)** down **LEGS (15)** and secure to **FLANGES (6)**, it may be necessary to twist and rotate **COVER (14)** to aid in proper seating onto **FLANGE (6)**
- Attach inlet of **CHECK VALVE (22)** to lower **OUTLET (23a)** of **BODY (23)**
- Attach **HEX (20b)** nut of **HOSE (20)** to lower outlet of **CHECK VALVE (22)**
- Operate faucet divert from tub spout to handshower and check for leaks





Features

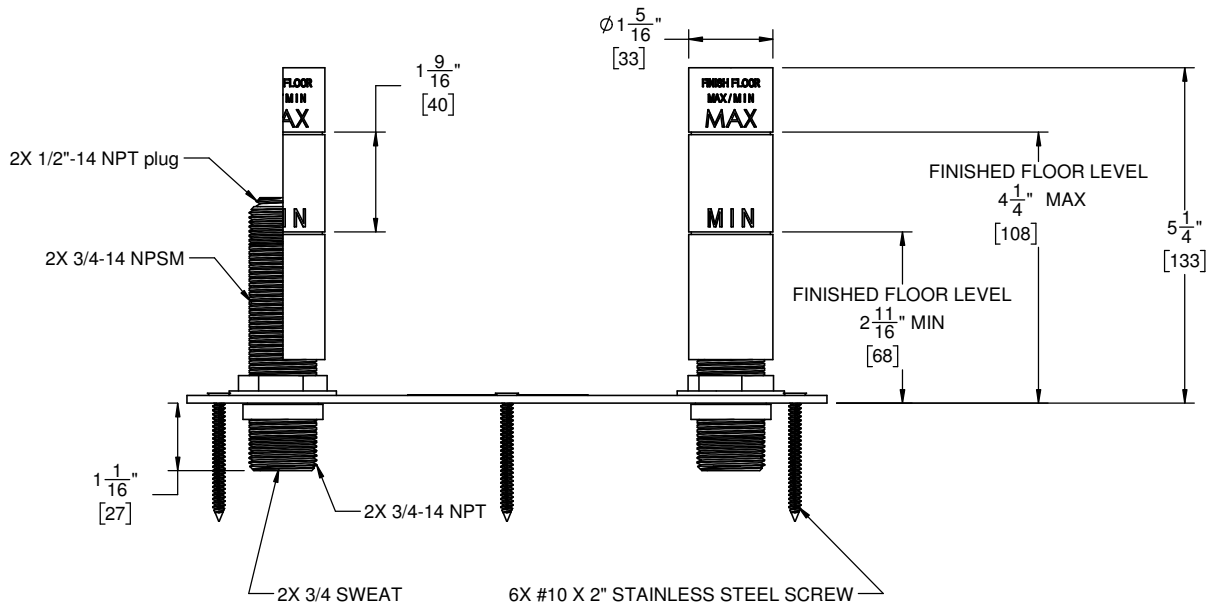
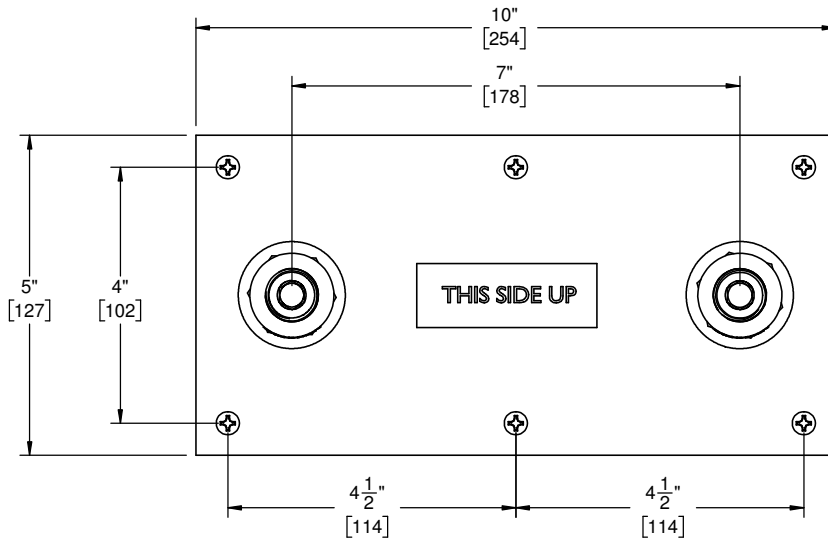
- Provides solid support for installation in concrete or wood subfloor
- 5" x 10" x 1/8" rigid plate with pre-drilled screw holes to mount to underlying wood framing
- Adjustable 4" brass nipples with 3/4" MIP or 3/4" nominal sweat inlets
- Included mudguard, test plugs & screws



Codes/Standards Applicable

- Meets or exceeds the following:
- ASME A112.18.1/CSA B125.1

Compatible Models
0903-XX
1003-XX
1103-XX
1203-XX
1303-XX
1403-XX
8508-XX
8508B-XX
8508W-XX
8608-XX
8608B-XX
8608W-XX



THROUGH-HOLE SPECIFICATIONS		
MIN	RECOMMENDED	MAX
MUDGUARD ϕ 1 5/16"	ϕ 1 3/8"	ϕ 1 1/2"



California Faucets®

9516

Rough for Floor Mount Tub Filler (for use with 1103-XX, 1203-XX, 1303-XX & 1403-XX)

Installation Instructions

CALIFORNIA FAUCETS RECOMMENDS THAT ALL PLUMBING PRODUCTS BE INSTALLED BY A LICENSED PROFESSIONAL

IMPORTANT: Read all instructions prior to installation and provide copy of instructions to consumer.

Operating Specifications:

Recommended Supply Pressure: 20 to 70 psi^{††}

Maximum Flow Rate: 15 gpm

* Operating pressures between hot and cold supplies should vary no more than 30 psi.

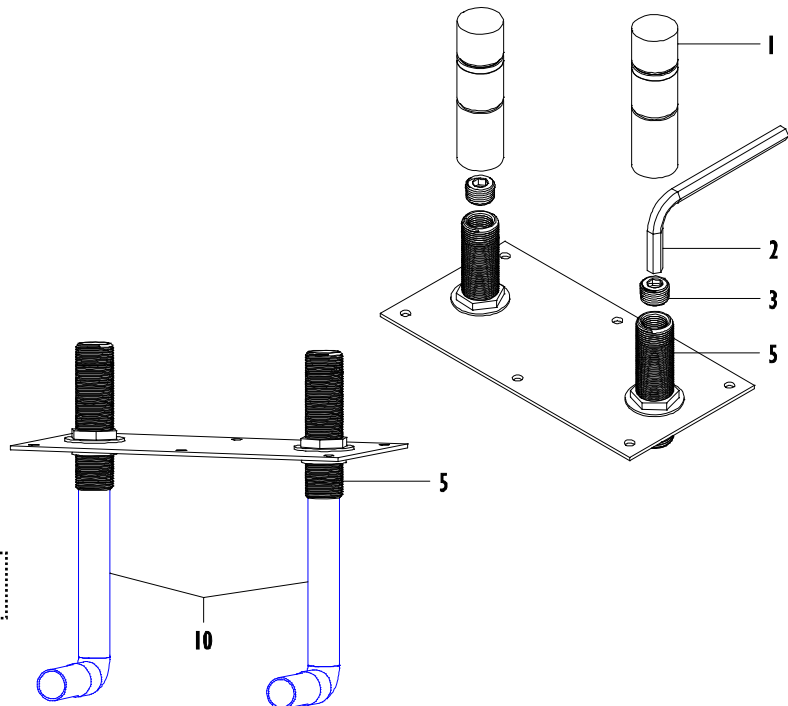
† If water pressure exceeds 70 psi, install a Pressure-Reducing Valve (RPV).

1 PREPARING SUPPLY NIPPLES

- Remove MUDGUARDS ①
- Using 3/8" hex KEY ② (not supplied), remove 1/2" PLUGS ③ from NIPPLES ⑤

Important: It is the responsibility of the **INSTALLER** to refer to the various installation methods shown in steps ③ or ⑤ to determine proper rigid copper PIPES ⑩ lengths.

- Solder or use female adapter to attach rigid copper PIPES ⑩ to bottom inlet of NIPPLES ⑤

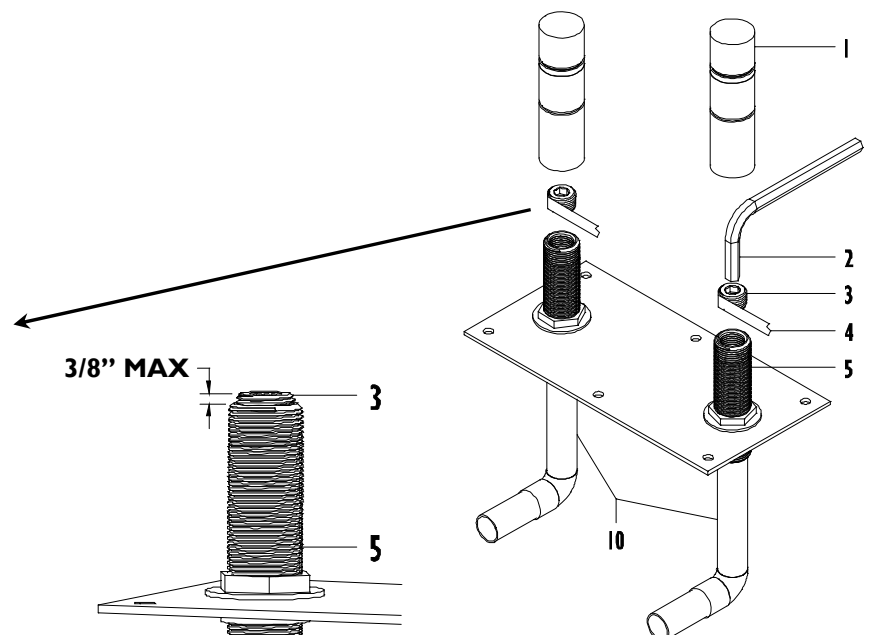


2 WATER TIGHT SEAL

- Apply Teflon® TAPE ④ (not supplied) onto PLUGS ③
- Using 3/8" hex KEY ② (not supplied), secure 1/2" PLUGS ③ (MAX height 3/8") into NIPPLES ⑤

Important: Tighten PLUGS ③, 3/8" MAX height into NIPPLES ⑤ so that PLUG ③ does not interfere with MUDGUARD ①
Only supplied PLUGS ③ may be used to ensure proper fit and installation height of MUDGUARDS ①

- Place MUDGUARDS ① onto NIPPLES ⑤



3 INSTALLING IN WOOD FLOOR

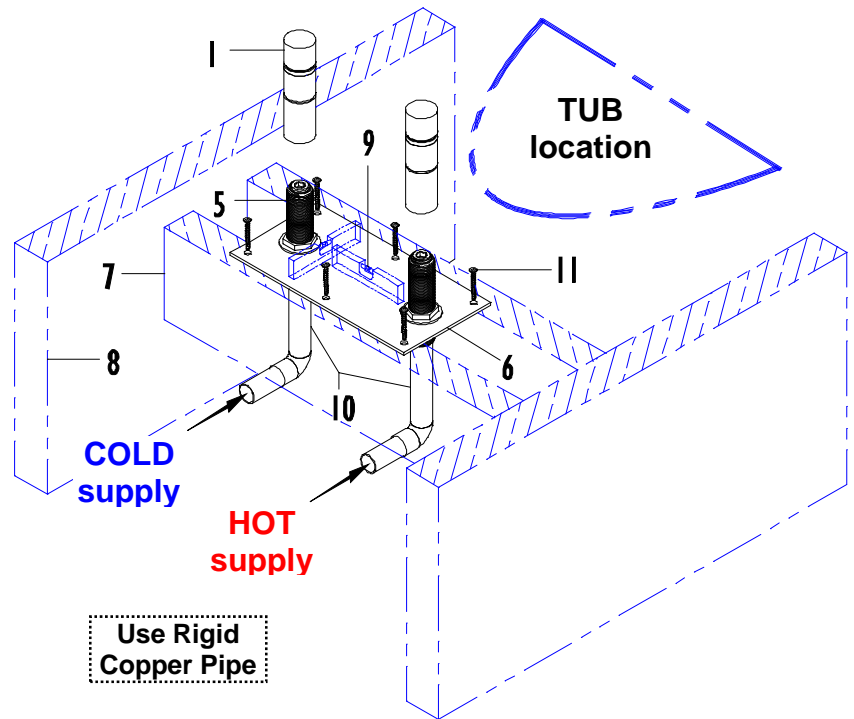
- Determine location of tub & faucet prior to proceeding

Important: It is the responsibility of the **INSTALLER** to ensure that the floor rough is properly secured to all sub-floor construction. All local building and plumbing codes and/or ordinances, shall be followed to confirm proper secure installation.

- After determining tub location preparing the floor is necessary to properly support the rough **PLATE** 6 by using 2 x 4 wood cross **SUPPORT** 7 which are attached floor **JOIST** 8

Important: It is the responsibility of the **INSTALLER** to have some knowledge of finished floor thickness before proceeding.

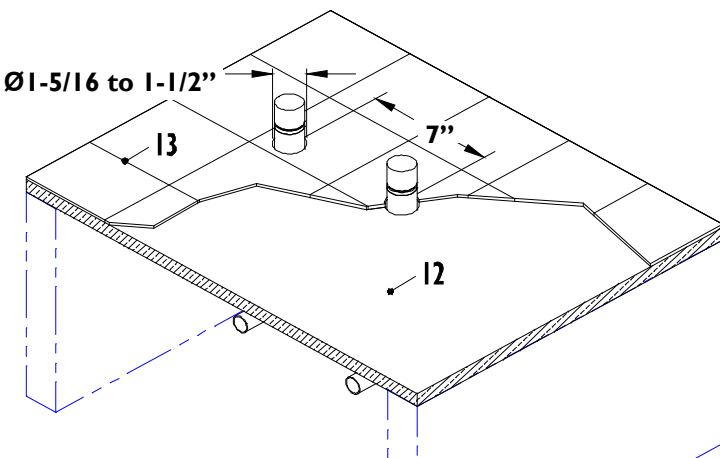
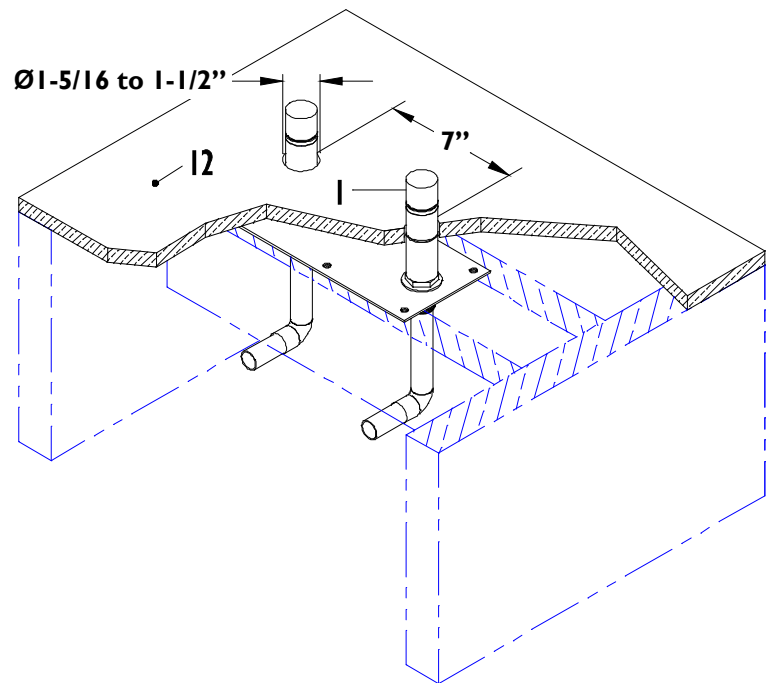
- Place **MUDGUARDS** 1 onto **NIPPLES** 5
- Use a **LEVEL** 9 to properly level the **PLATE** 6 and **SUPPORTS** 7 in all directions; vertical height of **PLATE** 6 is determined by using the **MIN/MAX** finished floor marks on **MUDGUARD** 1
- Verify that copper **PIPES** 10 attached to bottom of **NIPPLES** 5 clear **SUPPORT** 7; adjust in necessary
- Using **SCREWS** 11 secure the **PLATE** 6 to both **SUPPORTS** 7 and attach to floor **JOIST** 8
- Connect water supply to preassembled copper **PIPES** 10 and check for leaks



4 FINISHED FLOORING (on wood)

Important: It is the responsibility of the **INSTALLER** to have some knowledge of finished floor thickness before proceeding.

- Apply top floor **SUBSTRATE** 12 around **MUDGUARDS** 1, the two through holes shall be $\text{Ø}1\text{-}5/16\text{''}$ to $1\text{-}1/2\text{''}$ diameter and 7" center to center
- Apply top floor **COVERING** 13 (e.g. tile, stone, etc...) to floor **SUBSTRATE** 12
- Finished floor **COVERING** 13 must fall between the **MIN/MAX** marks on **MUDGAURD** 1 for proper installation of Floor Mounted Tub Filler Faucet



5 INSTALLING IN CONCRETE

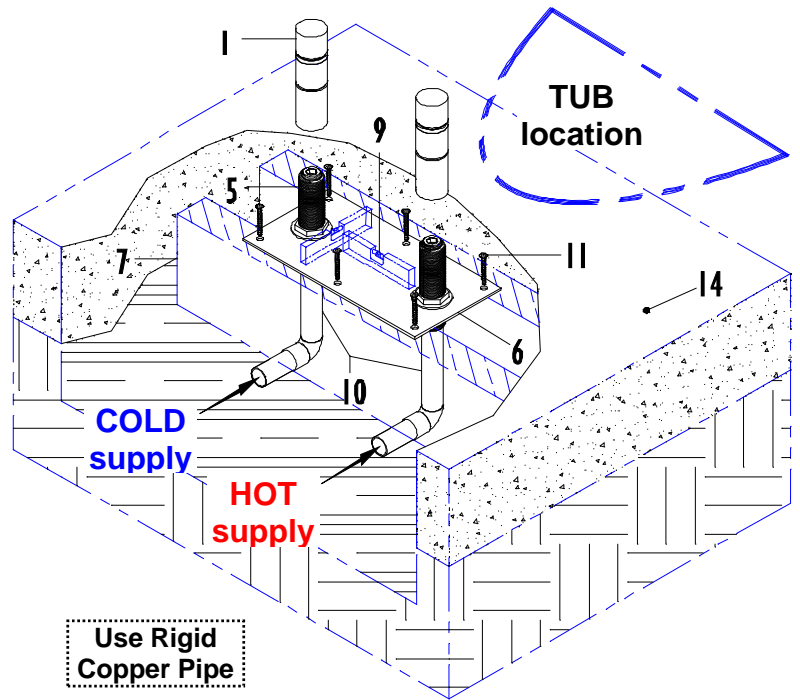
- Determine location of tub & faucet prior to proceeding

Important: It is the responsibility of the **INSTALLER** to ensure that the floor rough is properly secured to all sub-flooring construction. All local building and plumbing codes and/or ordinances, shall be followed to confirm proper secure installation.

- After determining tub location preparing the floor is necessary to properly support the rough **PLATE 6** by using 2 x 4 wood cross **SUPPORT 7** below the surrounding **CONCRETE 14** top surface

Important: It is the responsibility of the **INSTALLER** to have some knowledge of finished floor thickness before proceeding.

- Place **MUDGUARDS 1** onto **NIPPLES 5**
- Use a **LEVEL 9** to properly level the **PLATE 6** and **SUPPORTS 7** in all directions; vertical height of **PLATE 6** is determined by using the **MIN/MAX** finished floor marks on **MUDGUARD 1**
- Verify that copper **PIPES 10** attached to bottom of **NIPPLES 5** clear **SUPPORT 7**; adjust in necessary
- Using **SCREWS 11** secure the **PLATE 6** to both **SUPPORTS 7**
- Connect water supply to preassembled copper **PIPES 10** and check for leaks



6 FINISHED FLOORING (on concrete)

Important: It is the responsibility of the **INSTALLER** to have some knowledge of finished floor thickness before proceeding.

- Pour concrete FILLER (15) around MUDGUARD (1) encasing PLATE (6) and filling to surrounding CONCRETE (14)
- Apply top floor COVERING (13) (e.g. tile, stone, etc...) onto concrete FILLER (15) and surrounding CONCRETE (14)
- Finished floor COVERING (13) must fall between the MIN/MAX marks on MUDGUARD (1) for proper installation of Floor Mounted Tub Filler Faucet

